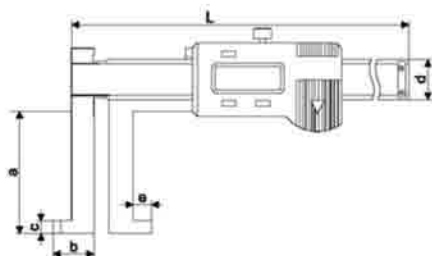


刀头内槽卡尺 / Inside Groove Calipers with Knife Points



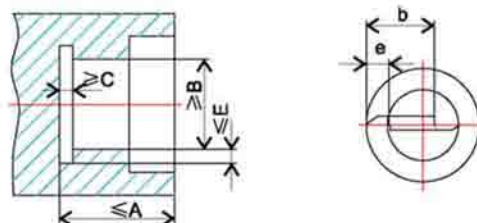
主要特点

- 错位爪, 可深入较小的孔内
- 可选用带预置数的电子组件, 使测量更方便, 而且磨损后不影响测量结果
- 特殊订货需提供以下参数:
 - 1、孔口直径
 - 2、沟槽至孔口距离
 - 3、沟槽宽度
 - 4、沟槽单边深度
 - 5、槽底形状

Features

- Cross-interaction Jaws achieve to a small inside hole.
- Electronic components with presetting functions can make measurement convenient and reset after the measuring faces are worn.
- Special order requires the following data:
 1. The diameter of the hole
 2. The distance from the groove to the orifice
 3. The width of the groove
 4. The depth of each groove
 5. The shape of the groove bottom

测量范围	货号	A	B	C	E	b	e
8-150	113-101-0	20	8	1	2.5	7.5	3
14-150	113-101	30	14	1	4.5	12	5
19-150	113-101-1	60	19	2	5.5	17	6
25-150	113-101-2	90	25	3	7.5	23	8
15-200	113-102	40	15	1	4.5	13	5
23-200	113-102-1	70	23	2	6.5	20	7
29-200	113-102-2	100	29	3	9.5	27	10
17-300	113-103	50	17	1.5	4.5	15	5
26-300	113-103-1	80	26	2.5	7.5	24	8
33-300	113-103-2	110	33	3.5	11.5	31	12
25-500	113-105	90	25	2	5.5	23	6
35-500	113-105-1	120	35	3	7.5	33	8
47-500	113-105-2	150	47	3	19	45	20



性能参数 Specifications

数显 Digital Type

测量范围 Measuring Range	货号 Order No.	分辨率 Resolution	极限误差 Limit Error	L	a	b	c	d	e
14-150mm	113-101	0.01mm	±0.03mm	236	30	12	1	16	5
19-150mm	113-101-1	0.01mm	±0.05mm	236	60	17	2	16	6
25-150mm	113-101-2	0.01mm	±0.05mm	291	90	23	3	20	8
15-200mm	113-102	0.01mm	±0.04mm	290	40	13	1	16	5
23-200mm	113-102-1	0.01mm	±0.05mm	290	70	20	2	16	7
29-200mm	113-102-2	0.01mm	±0.05mm	347	100	27	3	20	10
17-300mm	113-103	0.01mm	±0.05mm	400	50	15	1.5	17	5
16-300mm	113-103-1	0.01mm	±0.06mm	400	80	24	2.5	17	8
33-300mm	113-103-2	0.01mm	±0.06mm	453	110	31	3.5	20	12
25-500mm	113-105	0.01mm	±0.06mm	670	90	23	2	24	6
35-500mm	113-105-1	0.01mm	±0.07mm	670	120	33	3	24	8
47-500mm	113-105-2	0.01mm	±0.07mm	670	150	45	3	24	20